

FOUNDERS ROOM

November 2001

As endowed by Bank Julius Baer & Co. Ltd

First Floor

	Metric	Imperial
Length	7.750M	25.38FT
Width	6.300M	20.63FT
Height	3.675M	12.00FT
Area	48.820M ²	523.59FT ²

Feature

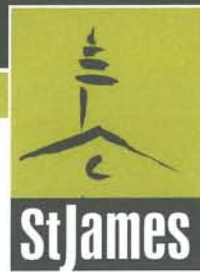
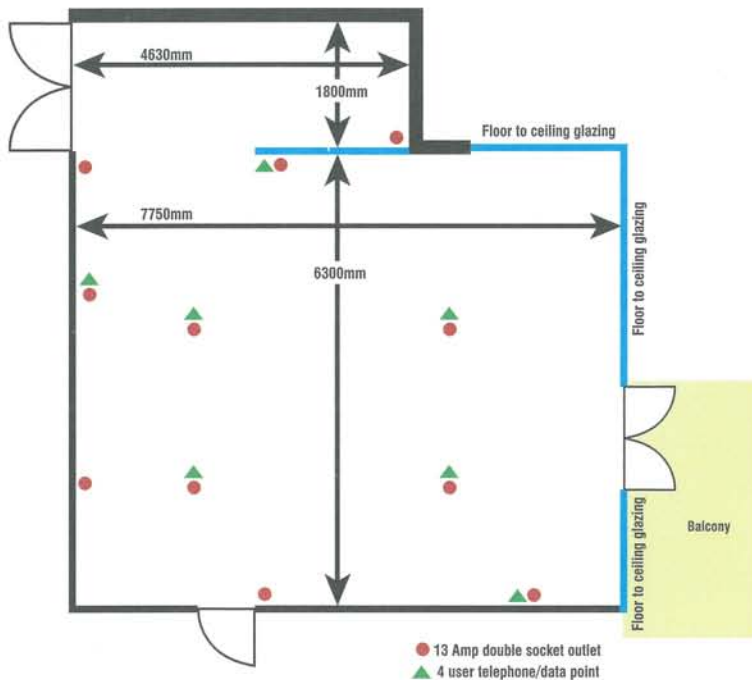
There is a balcony with double door access from this room. The balcony is shared with the cafe area.

Access

Via a corridor/lobby to the west of the room. There is an emergency exit to the cafe area.

Services

The room is equipped with data communication cabling with 28 connection points and patch-bay facilities. There are 10 double, 13 amp socket outlets divided over 1 circuit providing a loading capability of up to 3kW. The comprehensive lighting installation consists of a mixture of ceiling tile luminaries and low voltage downlighters divided over a number of circuits allowing variation in lighting levels. Automatic emergency lighting is fitted and emergency exits are always illuminated. The environment is heated by radiators with individual thermostatic valves; temperate/chilled air supply and extract ventilation is installed.



CONCERT & ASSEMBLY HALL
www.stjames.gg

Telephones

Administration 01481 711360

Box Office 01481 711361

Facsimile 01481 711364

E-mail admin@stjames.gg

College Street, St Peter Port
Guernsey, GY1 2NZ

Other Rooms available

Concert Hall

Dorey Room

N.M. Rothschild Room

Tapestry Room

Walter Room

NOTE:- ALL ROOMS HAVE FIRE
DETECTION AND ALARM FACILITIES.
FIRE EXTINGUISHERS ARE PROVIDED IN
ACCORDANCE WITH LOCAL AUTHORITY
REGULATIONS.

CHAIRS, TABLES, DISPLAY SCREENS,
PROJECTORS, P/A EQUIPMENT ETC. IS
AVAILABLE BY ARRANGEMENT.

Produced in association with the
Insurance Corporation of the Channel Islands

