



CONCERT HALL AND TECHNICAL INFORMATION

Lighting

House Lighting

There are 4 small chandeliers and 1 large which form part of the house lighting along with complimentary spot lighting in the decorative apse feature. These are all controlled via a 12 channel lighting desk through dimmers. The remainder of the house lighting is on/off, controlled from the lighting box. This consists of main ceiling and under balcony downlighters, wall mounted 'candle' fittings and some strip lighting. There are 4 small spots dedicated to a tapestry wall at the rear of the auditorium.

Stage/performance lighting

The installed lighting consists of 16 x 300W parcans, 2 x 600W floods and 6 x 500W Minuette fresnels divided left and right of stage and positioned below and above the horseshoe balcony legs. There are 2 further fresnels mounted one each side of the hall at high level. The current fixed cabling provides 32 amps per side of the hall with a further 13 amps at the rear.

Sound

There is a lighting/recording room at the rear of the hall at ground floor level. Additionally, there is a sound/lighting control position in the gallery at the rear of the hall.

There are 12 microphone channels from the stage to both these positions. Further, there are 2 speaker lines from the two control positions, one to each side of the stage. There are paralleled jack sockets stage left and right, upstairs and down and at mid down stage.

The hall is fitted with a hearing aid induction loop.

In house equipment includes: -

1 x Citronic PPX amplifier	1 x TOA MX- 106R powered mixer
1 x TOA RX212 mixer	1 x CD player
1 x Cassette player.	2 x Bose 802-W series 2 speakers
2 x Bose 402-W speakers	

Power

There are three 13 amp power circuits providing a total of 22 socket outlets spaced around the hall including 8 on stage.

Communication

Lines are currently being installed which will provide communication between any selected rooms within the whole complex. This enables cueing from the lighting/sound position to the dressing rooms.

Safety

The hall is equipped with a fire alarm system and emergency lighting. All functions are overseen by a Duty Manager (provided by the Management). Sufficient Stewards are also required. All safety procedures are as laid down by local authorities and in accordance with the Salle Publique licence requirements.

Supplementary Facilities

We have access to a number of organisations from which further sound and lighting equipment is available to hire.

CONCERT & ASSEMBLY HALL
www.stjames.gg

Telephones

Administration 01481 711360

Box Office 01481 711361

Facsimile 01481 711364

E-mail admin@stjames.gg

College Street, St Peter Port
Guernsey, GY1 2NZ

Other Rooms available

Dorey Room

Founders Room

N.M. Rothschild Room

Tapestry Room

Walter Room

NOTE:- ALL ROOMS HAVE FIRE
DETECTION AND ALARM FACILITIES.
FIRE EXTINGUISHERS ARE PROVIDED IN
ACCORDANCE WITH LOCAL AUTHORITY
REGULATIONS.

CHAIRS, TABLES, DISPLAY SCREENS,
PROJECTORS, P/A EQUIPMENT ETC.
ARE AVAILABLE BY ARRANGEMENT.

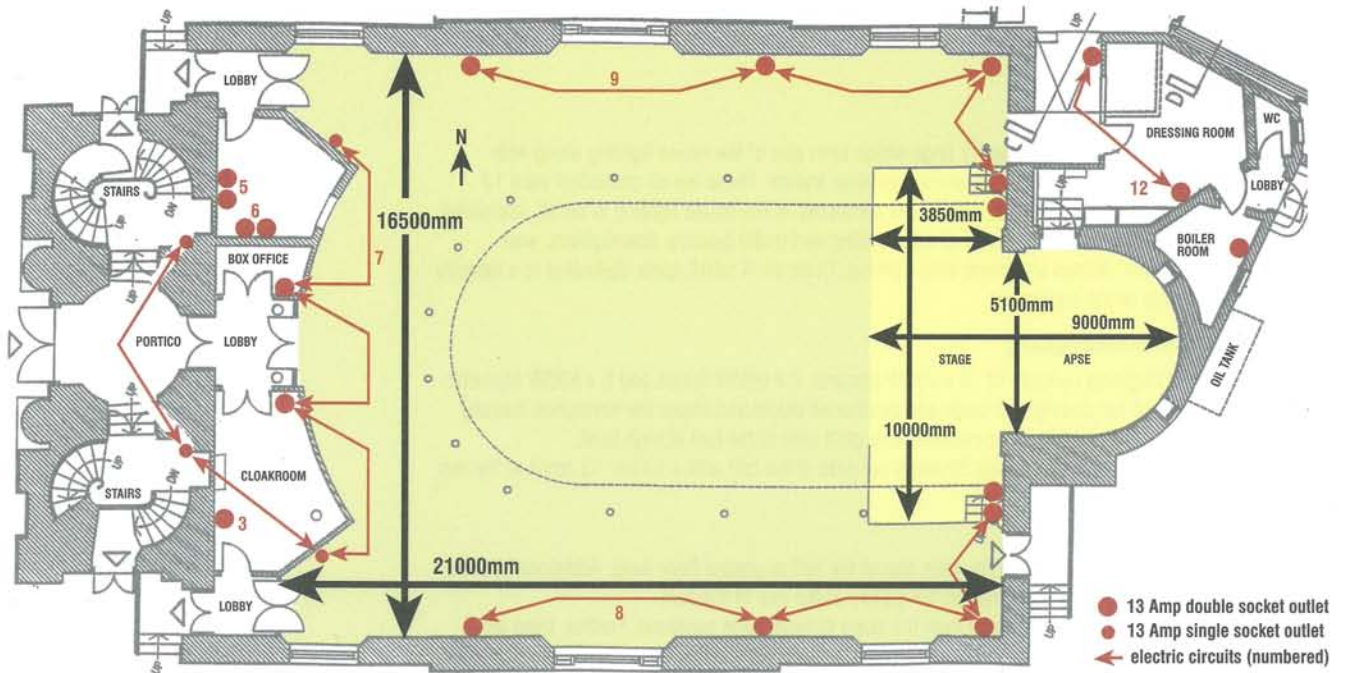
Produced in association with the
Insurance Corporation of the Channel Islands



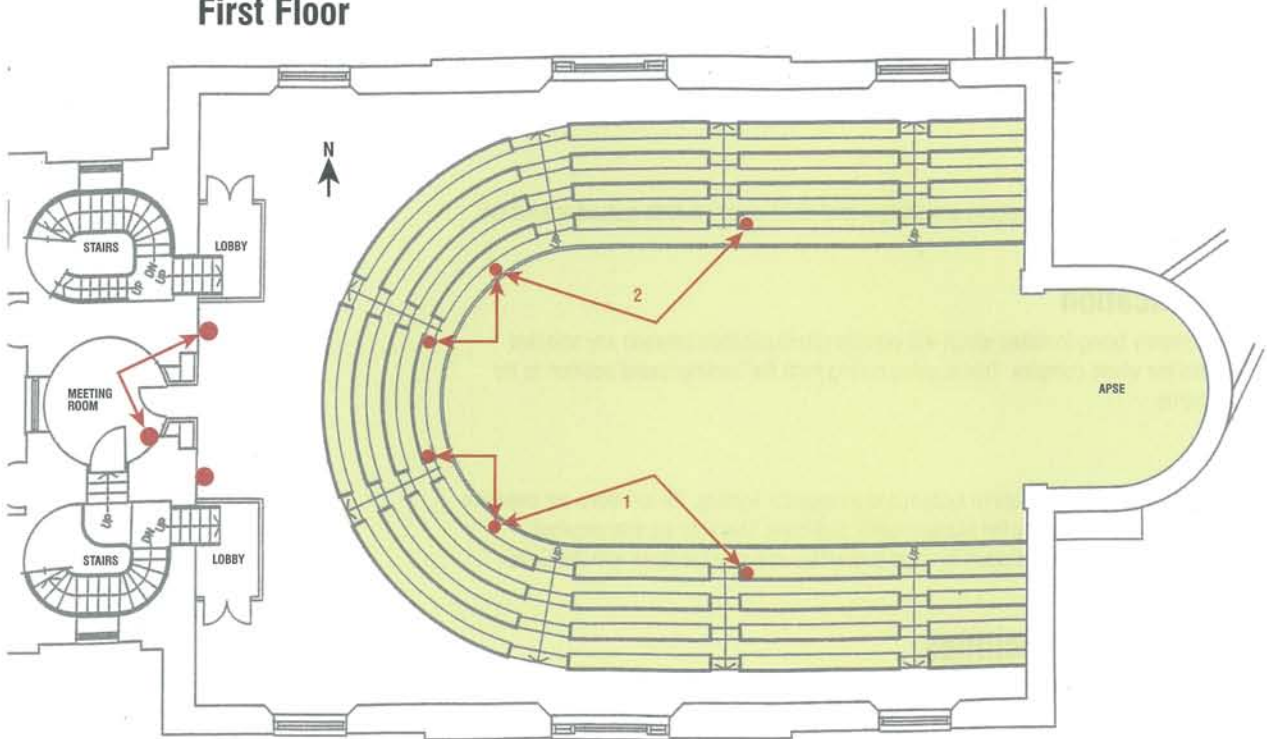
**INSURANCE
CORPORATION**

FLOOR PLANS

Ground Floor



First Floor



Produced in association with the Insurance Corporation of the Channel Islands

